

Selection table Soluflex Cable Floor System

H = 37/50/60/70/80/90/120/150 mm

	Slab	Plot	Grounding slab	Exit slab	Project edge coating	Rand afwerking		Plenum seal	Plenum outer corner	Ramp	Mounting tile	
	Sendzimir L225 x I225 x H13 mm	Polypropoleen	Sendzimir L225 x I225 x H13 mm	Sendzimir L225 x I225 x H13 mm	Sendzimir L900 mm x I300 mm 2x reverse side van 13 mm	Sendzimir L900 mm x I275 mm 1x reverse side van 13 mm		Sendzimir L = 900 x I56 x H60 mm,	Sendzimir 56 x 56 mm	Sendzimir Helling 10%, B = 112mm	Sendzimir L225 x B225 x H13 mm	
			Grounding terminal 6 mm ² (max.), 1 slab per 100 m ² or in aisles max. 14 m apart	Recess 124 x 14.5 mm For cable entry to the workstation	Sawing to size on site for wall connections	Sawing to size on site for wall connections		For sealing the floor in the free space		1 foot ref. 8406000 to be additionally included per strip	For columns, columns + Cable Worm (see chapter multi- socket columns) and wire outlet (ref. 8190232). Hole Ø 64 mm	
Height (mm)										Length		Height (mm)
H37		8403700						8403722	8403730	400 mm	8403740	H37
H50		8405000						8405022	8405030	523 mm	8405040	H50
H60		8406000						8406022	8406030	616 mm	8406040	H60
H70		8407000	8400020	8400030	8400060	8400061		8407022	8407030	712 mm	8407040	H70
H80	8400010	8408000						8408022	8408030	803 mm	8408040	H80
H90		8409000						8409022	8409030	898 mm	8409040	H90
H120		8412000						8412022	8412030	1181 mm	8412040	H120
H150		8415000						8415022	8415030	1406 mm	8415040	H150

H 25 mm available on request

Junction box 4 V	Junction box 4V (Wieland)	Junction box 4V (Wago)	Junction box 4V (Wieland)	Junction box 4V (Wago)
		Plastic (black)	Sendzimir	
	Pre-wired: 3x black female + 1x white male		1 YMV/K input, 1 YMV/K output or cord, pre-wired with a 6-branch quick connector and equipped with a terminal block with cable clamps.	
H37 - H150	8400211	8400212	8400077	8400078

Data distribution boxes for Legrand/keystone or third parties available on request.

IK-4 (8-24 modules)	Tiles for IK-4 floor boxes (rectangular/square)			Tile for floor boxes IK-4 (round)
	Sendzimir / 450 x 450 mm			
	8-12 modules	12-16 modules	16-24 modules	Round
H90 - H150	8496091	8496092	8496093	8496095

IK-3 (2 x 8 modules)	Square back box IK-3 vertical	Lid assembly for a floor box IK-3 vertical	Optional	Protective hoods	Solid stainless steel cover plate
		Sendzimir/ L450 mm x I450 mm			
	For square cover set Art. no. 088070 Including disposable lid	Equipped with the following items : Lid with cable entry + handle (the lid can also be detached from the unit), support frame for sockets (4x230V) and data(8 modules), protective covers not included (see product 088071)		Set of protective covers for 4x230V sockets and data 8 modules, easy mounting on the cover set and easy cable routing with cable exit points	For finishing on the vertical IK-3 cover assembly, supplied with a protective foil (so as not to damage the cover plate during construction) Equipped with the following: adhesive strips for attachment to cover assembly Suitable for carpet or vinyl finished floors
H50 - H150 ⁽¹⁾	8409057	088070		088071	088072

(1) Warning: at least at flatness class 4, height 50 mm

Ref.	Accessories
8400170	 Soluflex Service Channel Soluflex Channel Clamp For plenum joint fixing For use with Soluflex Service Channels Quantity depending on width, length and the shape of the channel

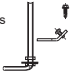
Soluflex service channel	
	Minimum width for placing floor boxes
IK-3	From 3 slabs
IK-4	From 3 slabs

Selection table for Van Geel GVO-7 open floor ducts

H = 40-115 mm

		Basic set floor sheath ^(1/2)	Blind lid			Cover for chapels GVZ-8	Lid for floor box IK-4		Cover for floor box IK-3	Partition wall	Universal sliding bracket	Assembly kit parts ⁽³⁾ GVO-7	Lid support		
							From height 85 mm	From height 55 mm			Can be used as a slip-on connector strip and as a corner connector strip	For L- or T-branches set of 2 required			
							8 - 12 mod.	12 - 18 mod.							
Width	Type	L = 2400 mm	L = 800 mm	L = 400 mm	L = 800 mm	L = 400 mm				L = 2400 mm				Type	Width
200 mm	H = 40-65 mm	8471020	8474020		8474520								8476020	H = 40-65 mm	200 mm
250 mm		8471025	8474025		8474525					8470017 (Hauteur = 23 mm)	8470030	8470027	8476025		250 mm
300 mm		8471030	8474030	8478030	8474530				8476030				300 mm		
350 mm		8471035	8474035	8478035	8474535			8478335	8476135				350 mm		
400 mm		8471040	8474040	8478040	8474540			8478340	8476140				400 mm		
200 mm	H = 65-90 mm	8472020	8474020		8474520								8476020	H = 65-90 mm	200 mm
250 mm		8472025	8474025		8474525					8470018 (Hauteur = 48 mm)	8470030	8470027	8476025		250 mm
300 mm		8472030	8474030	8478030	8474530	8478430	8478530		8476030				300 mm		
350 mm		8472035	8474035	8478035	8474535	8478435	8478535	8478335	8476235				350 mm		
400 mm		8472040	8474040	8478040	8474540	8478440	8478540	8478340	8476240				400 mm		
200 mm	H = 90-115 mm	8473020	8474020		8474520								8476020	H = 90-115 mm	200 mm
250 mm		8473025	8474025		8474525					8470019 (Height = 73 mm)	8470030	8470027	8476025		250 mm
300 mm		8473030	8474030	8478030	8474530	8478430	8478530		8476030				300 mm		
350 mm		8473035	8474035	8478035	8474535	8478435	8478535	8478335	8476335				350 mm		
400 mm		8473040	8474040	8478040	8474540	8478440	8478540	8478340	8476340				400 mm		

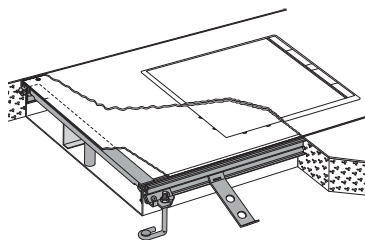
- (1) Includes:
- Duct body, 2 side and marking profiles made of aluminium
 - 3 covers supports
 - Mounting assembly with all support flanges and mounting hardware
 - Height adjustable
 - Material thickness 1 mm

- Mounting kit (extra support for floor duct cover/finish) Art. no. 8470023 includes:
- 6 straight support and connection brackets
 - 6 adjusting rods from 40 - 115 mm
 - 6 mounting flanges
 - 18 cover screws
 - 8 plate bolts/plaque
- 

- (3) Mounting kit parts GVO-7 Includes:
- 2 x 40 - 115 mm adjusting rods
 - 2 x inner corner connection
 - 2 x universal sliding bracket

THE OPEN FLOOR SYSTEM

- The GVO-7 open floor duct system is installed in the covering floor. After installation, the covers remain removable.
- The open floor covering consists of 1 body, 2 aluminium side profiles and 3 or 4 mm thick covers.
- The side profiles are adjusted to the correct height by means of adjustment brackets. The covers are screwed to the support profiles. Depending on the duct height and width, cover sets (1) can be selected which can be recessed or on which chapels can be mounted.

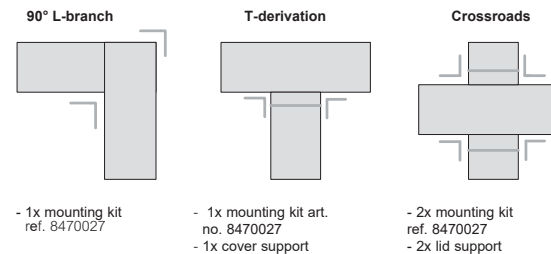


- The open floor duct system can also be used as a feed channel with blind covers. The open floor duct system can be opened over the entire length of the floor.
- The system is delivered in "basic sets" which are composed and assembled on site.
- The channels can be delivered in widths from 200 to 400 mm, and can be recessed into floors from 40 to 115 mm thick.
- Corner and bypass pieces can be easily made up from the elements of the basic sets.
- (1) A minimum installation depth of 78 mm is required when using cover sets.

- Flexible and extendable with connection technology
- Large cable capacity
- Good accessibility

- (1) Required installation depth when using cover sets:
- IK-3: from height 55 mm upwards
 - IK-4: from height 85 mm

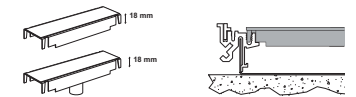
Assembly instructions parts GVO-7 : Don't forget to order the related articles to be able to mount the connection.



IMPORTANT MOUNTING ADVICE FOR THE GVO-7 :

When mounting the GVO-7, the cover must be screwed onto the aluminium profiles as described in the installation manual. A different mounting order may result in too large a gap between the top of the cover and the floor.

Lid support

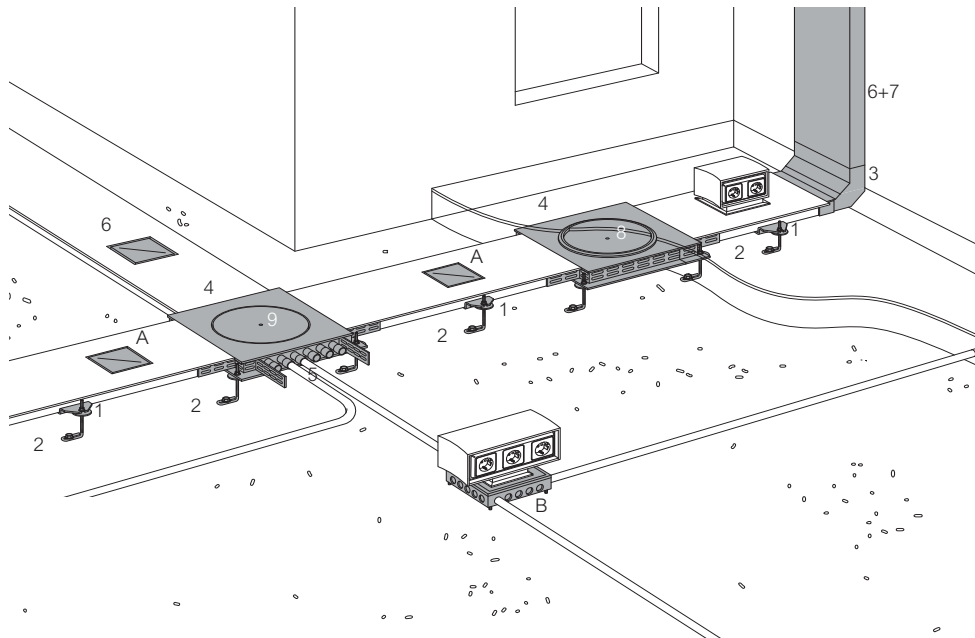


This is pressed into the side profiles at 800 mm intervals at the height of the cover seals it takes up 18 mm of the available duct height

For 350 and 400 mm duct bodies, the lid support has an additional adjustable central support

Selection table for Van Geel GVG-3 closed floor ducts
H = 30/40 mm

Width	Type	Floor sheathing	Assembly splice	Adjustment support	Tip	Raise/lower angle	Closed junction box	Vertical duct	Cover for vertical duct		Lid with carpet rim	Raising disc	Adjusting plate	Aluminium cover	Width
		3 compartments including 5 aluminium sealing covers	For each connecting bar, 2 mounting brackets are required. adjustment ref. 8440140	To adjust the height of the system	For closing the floor sheathing	For the connection of the floor sheath with the vertical junction box. Including two separate partition walls.	Can be used as my connection cross, T or angle		Unlacquered			Ø 238 mm With carpet edge made of grey plastic RAL 7032	Ø 218 mm, thickness 3 mm Use with cover-matted wrench	To prevent rotation of the adjustment bracket	
		Length 3000 mm	1 Connecting splice per meter					Length 1000 mm	sendzimir	RAL 9010					
190 mm	H = 30 mm	8421130	8440130	8440140	8441110	8441350	8421214	8435102	8435112	8435132	8420220	8420230	8440210	8420320	190 mm
250 mm		8421134	8440134		8441114	8441354		8435104	8435114	8435134					250 mm
190 mm	H = 40 mm	8422130	8440130	8440140	8442110	8442350	8422214	8435102	8435112	8435132	8420220	8420230	8440210	8420320	190 mm
250 mm		8422134	8440134		8442114	8442354		8435104	8435114	8435134					250 mm



CHAPELS WITH MOSAIC OUTLETS

The closed floor duct system can always be combined with chapels. The columns contain the necessary connections.

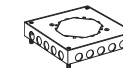
This floor duct system offers the possibility to place a chapel every 600 mm on the channel. Depending on the number of connections to be integrated, there are 4 types of chapels to choose from. These columns can be fitted with connections on both sides.

The chapels can be equipped with both the standard equipment (80 mm) and the compact Mosaic material.



Chapels GVZ-8

Ref.	Floor installation box
8460300	The floor installation box is ideally suited for renovation work because it requires minimal demolition work. If tubes are used instead of ducts, the duct box can be used as a universal junction and connection box. The duct box supports the installation of all types of GVZ-8 chapels or columns. Columns can also be mounted under certain conditions, please consult our sales department for this purpose. Can be used as a box junction and connection universal



Chapels GVZ-8

Mosaic Equipment

